

DOCJOHNSON®

iVibe™  
select



iRoll

6027-15/16-BX

## Features



Multi-Function  
Rotating "Tongues"  
Provide Clitoral  
Stimulation



3-Speed Stimulating  
Beads Move Up  
& Down Shaft



Deep, Powerful  
Vibrations with 8  
Vibrating Functions



Individual  
Function Controls



Luxurious  
Premium Silicone



USB Rechargeable  
(Cable Included)

Water Resistant  
•  
Hypoallergenic,  
Phthalate-Free, and Body-Safe

### Approximate Product Dimensions:

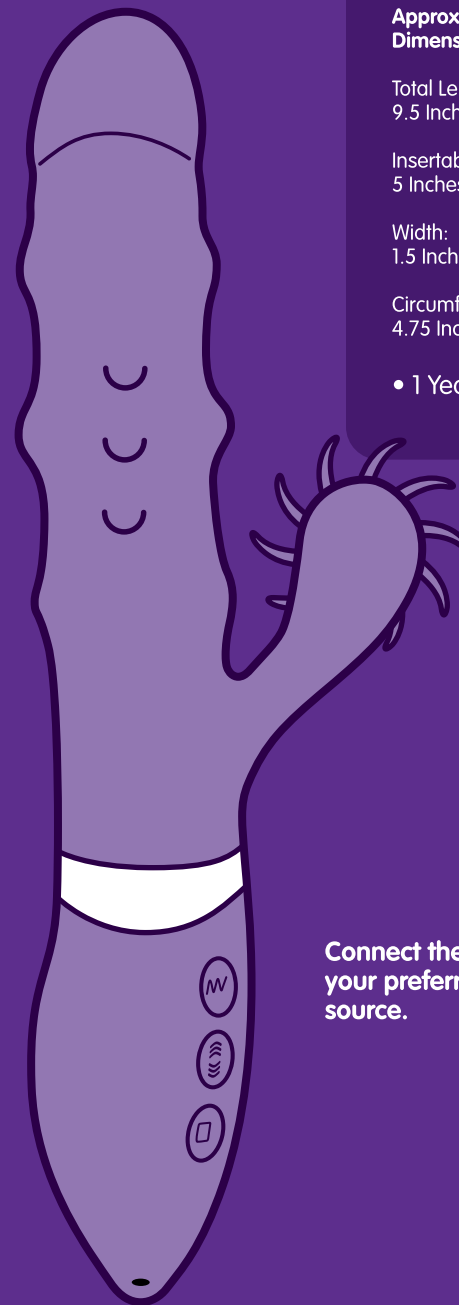
Total Length:  
9.5 Inches (24.13 cm)

Insertable Length:  
5 Inches (12.7 cm)

Width:  
1.5 Inches (3.81 cm)

Circumference:  
4.75 Inches (12.07 cm)

• 1 Year Warranty



Connect the USB end into  
your preferred power  
source.

↑  
Connect  
charger here



## About This Product

With the introduction of the iVibe Select iRoll, we've continued to reinvent the rabbit-style massager for the 21st century. iRoll's insertable vibrating shaft is textured with motorized beads that move up and down its length, while an external clitoral stimulator is equipped with a rolling wheel of silky-soft silicone "tongues" that recreate the sensation of oral sex.

## Why Silicone?

Silicone is hypoallergenic and nonporous, making it the safest and most high-end material used in today's pleasure products. Our premium silicone is completely body-safe without compromising the beauty of each piece and has a smooth, velvety texture. When we created the iVibe™ Select line of products, we knew that this attractive and hygienic material was the only acceptable choice.

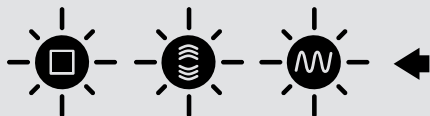
## Getting Started

For the best experience, we recommend cleaning and fully charging your iVibe™ Select iRoll before the first use.

**To charge**, connect the USB cable included with your iRoll into your preferred power source. Locate the small charging port at the bottom of your iRoll and firmly push the charger jack into it. (The charging port may appear too small due to iRoll's protective silicone exterior, but will stretch to accommodate the charger.)



- **Charging Time: 2.5 Hours**
- **Usage Time: 45 Minutes**



LED Lights are located on all three buttons

**LED Flashing:** Charging

**LED Continually Lit:** Item is fully charged

**LED Off:** Charging Cable Detached

## Using Your iVibe™ Select iRoll

iRoll can be used with any combination of the 3 separately-controlled motors enabled, offering a number of stimulating combinations. Many users find that their iVibe™ experience is improved with the use of a water-based lubricant.

**Do not use the iVibe™ Select iRoll with oil-based or silicone-based lubes.**

### To Operate iRoll's Powerful Vibrations



- Turn On/Off:** Press and hold button for approximately 3 seconds until LED lights up.
- Change Vibration Pattern:** Press button without holding.

### To Operate Rolling Clitoral Wheel



- Turn On/Off:** Press and hold button for approximately 3 seconds until LED lights up.
- Change Wheel Direction:** Press button without holding; wheel can rotate clockwise, counterclockwise, and back and forth.

### To Operate Moving Shaft Beads



- Turn On/Off:** Press and hold button for approximately 3 seconds until LED lights up.
- Change Speeds:** Press button without holding.

## Care and Maintenance

Proper cleaning and storage of your iVibe™ Select products are essential for your continued enjoyment.

**To clean**, spray with Doc Johnson® Toy Cleaner or wash with mild soap and warm water and wipe clean, avoiding iRoll's charger port. Do not submerge. Allow your iRoll to dry completely before storing separately from other toys in a cool, dry place. (Doc Johnson® Toy Cleaner not included.)

**When storing**, ensure that your iVibe™ Select product does not come into contact with other toys. Keep away from extreme heat, cold, and moisture. Use iVibe™ Select products with water-based lubricants only; oils and silicone-based lubes will degrade the material of your iRoll.

**WARNING FOR VIBRATING PRODUCTS:** To avoid injury or aggravation of pre-existing conditions, this product should not be used on swollen or inflamed areas or skin lacerations. No medical claims are warranted or implied by the use of this product.

**Designed by Doc Johnson® in Los Angeles, California.**  
Copyright © 2018 Doc Johnson Enterprises. All Rights Reserved.

For warranty information and product registration, please visit us online at [docjohnson.com](http://docjohnson.com)



**Socialize  
with the Doc**

[www.docjohnson.com/social-media](http://www.docjohnson.com/social-media)

KIN-6027-15