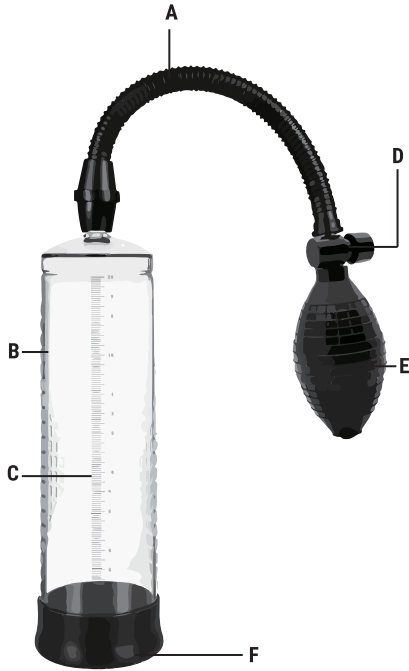


- A: Air Pipe
- B: Vacuum Tube
- C: Scale
- D: Release Valve
- E: Easy-Squeeze Bulb
- F: Silicone Ring



Function: To help in the enlargement of your penis

- **CREATES THICKER, HARDER ERECTIONS**
- **CLEAR VACUUM CYLINDER WITH CENTIMETER MARKINGS TO TRACK PROGRESS**
- **SOFT SILICONE SLEEVE FOR AIRTIGHT SEAL**
- **EASY SQUEEZE BULB HANDLE**
- **AIR RELEASE BUTTON FOR FAST, SAFE REMOVAL**
- **PHTHALATE-FREE, BODY-SAFE**

APPROXIMATE PRODUCT DIMENSIONS:

- TOTAL LENGTH: 8.75 IN. (22.2 CM)
- INSERTABLE LENGTH: 8 IN. (20.3 CM)
- INNER DIAMETER: 2.75 IN. (70 MM)

- | | |
|-------------------------|------------------------------------|
| US Penis Pump | NL Penis pomp |
| FR Pompe à Pénis | ES Bomba de vacío para pene |
| DE Penispumpe | RU |

DOC.JOHNSON.com



Designed by Doc Johnson in Los Angeles, California.
 Made in the PRC. All Rights Reserved. The shape and appearance of the product inside this package are a trademark and trade dress of Doc Johnson Enterprises. Copyright © 2023. Distributed by Doc Johnson Enterprises, P.O. Box 9908, North Hollywood, CA 91609-9908.

WARNING: If you have symptoms of erectile dysfunction (i.e., inability to achieve an erection that is sufficient for sexual intercourse), consult your physician prior to using this device to avoid a potentially harmful delay in diagnosing any of the most common causes of this condition, such as diabetes, multiple sclerosis, cirrhosis of the liver, chronic renal failure, or alcoholism. This pump is not intended for medical use. It has not been clinically tested nor is it approved. Use of this product is done at your own risk. This is a recreational device and is not empirically validated.

FOR WARRANTY INFORMATION, GO TO DOC.JOHNSON.COM

INS-3705-03

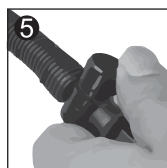
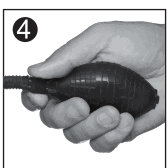
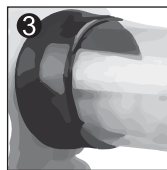
DOC.JOHNSON®

**ROCK
SOLID
CLASSIC
PENIS PUMP**

TOTAL LENGTH: 8.75 IN. (22.2 CM)
QUALITY • COMFORT • PERFORMANCE

• Instructional Guidelines:

- Ensure that all parts are securely connected.
- Apply water-based lubricant around the silicone ring to reduce friction.
- Gently insert your penis, ensure that the seal is airtight around your penis.
- Gently pump the easy-squeeze bulb to comfortable pleasure.
- If you feel any pain, press the air release valve to decrease the pressure.



⚠ Note

- Wash before first use.
- Massage oils, hand creams, detergents, gasoline, or anything besides a lubricant or glide should not be used as lubricants with this pump.
- For your best results, use this pump with a water-based lubricant or glide, always select the appropriate pressure to avoid hurting your penis.

After Usage:

- Clean each piece with Doc Johnson Toy Cleaner (sold separately) or mild soap and warm water, and allow to air dry completely before storage/reassembly. Reassemble and store in a cool, dry place.
- Always dry it naturally and avoid direct contact with sunlight.



PRODUCT USES AND WARNINGS:
 To ensure the safe use of our products and to extend product life, before using our products please scan the QR code and review our Product Use Guidelines. Although all Doc Johnson products are designed and manufactured with great care, we urge our customers to practice sex toy safety. These Guidelines are also available on our website at <https://www.docjohnson.com/safety-practice>.

EU Authorised Representative
 (for authorities only)
 ProductIP AR Services
 Galvanistraat 1
 6716 AE Ede
 The Netherlands

UK Authorised Representative
 (for authorities only)
 ProductIP (UK) Ltd.
 8, Northumberland Av.
 London WC2N 5BY