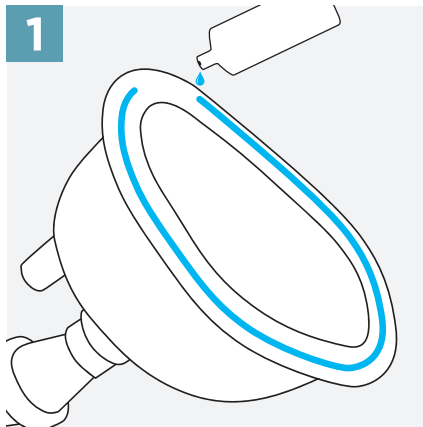


Doc Johnson Pussy Pump

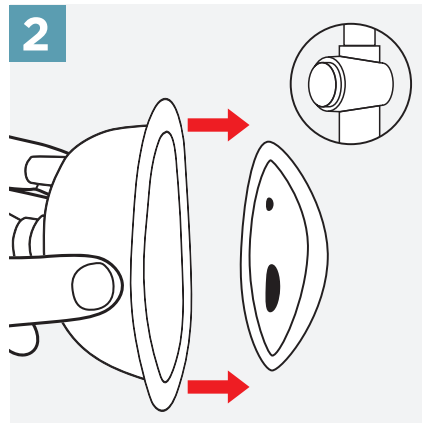
SKU #:0616-00-BX

The bestselling Doc Johnson Pussy Pump is easy to use and ergonomically designed for comfort, adding new dimensions to solo or partner play. Pussy pumping increases sensitivity and arousal, strengthens orgasms, produces visually stimulating results for an enhanced sexual experience.

How To Use:



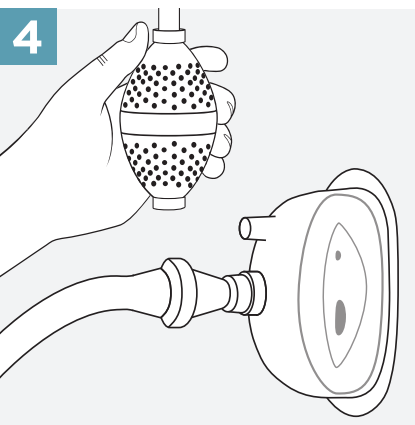
Apply a water-based lubricant to the surface of the pump that meets the skin; this will help form a seal and create suction.



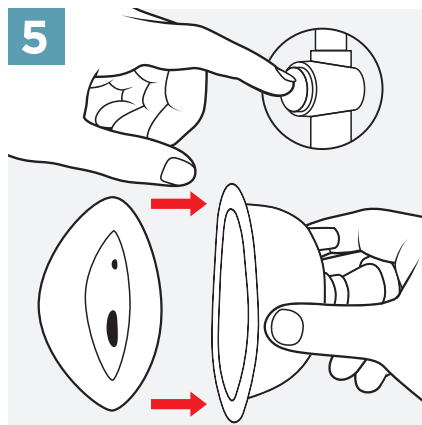
Gently press and hold the pumping chamber to the preferred area with one hand and make sure the quick-release pressure valve is closed.



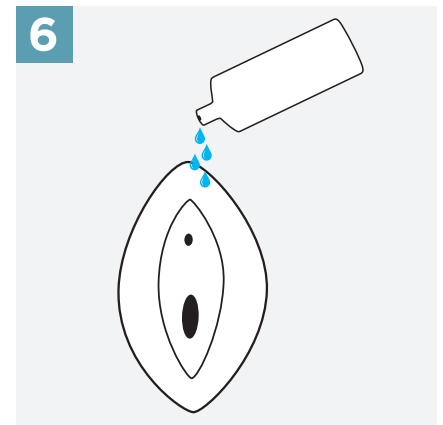
With your other hand, squeeze the bulb to begin pumping. After a few pumps, enough suction should form to keep the pumping chamber in place without holding it.



Continue pumping and watch for the pumped area to begin swelling. The recipient will also be able to feel the enlarging effects.



When the area is visibly swollen or when the recipient is ready to stop, open the quick-release valve and gently remove the pump.



Use extra lubricant for sex or masturbation after pumping.

CAUTION: Do not overpump. If any pain or discomfort is experienced during use, stop pumping immediately and open the quick-release valve.